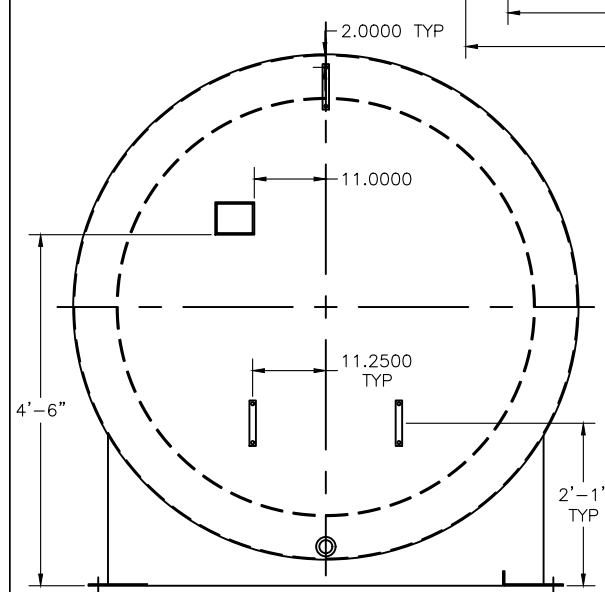
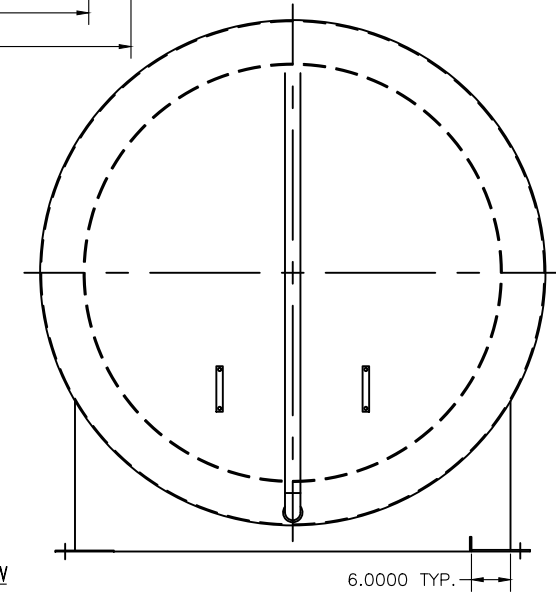


ELEVATION VIEW

STANDARD  
MODEL NO. MHC-D3-4000



LEFT END VIEW



RIGHT END VIEW


CONNECTION DATA	PRIMARY TANK	SECONDARY TANK
Ø 2" FPT.	Ø 2 7/16"	Ø 2 7/8"
Ø 2" TANK FLNG.	-	Ø 2 3/4"
Ø 4" FPT.	Ø 5 5/8"	Ø 5 3/16"
Ø 8" PRIM. E.V.	Ø 8 3/4"	Ø 9 3/4"
Ø 8" SEC. E.V.	-	Ø 9 3/4"

FITTING SCHEDULE

DESIGN: FABRICATED PER UL-142 & 2085, SWRI (SOUTHWEST RESEARCH)  
 INSPECTION: MODERN WELDING COMPANY  
 MATERIAL: MILD CARBON STEEL (UNLESS NOTED)  
 (INTERNAL): SURFACE PREP - N/A  
 COATING - N/A  
 (EXTERNAL): SURFACE PREP - SSPC-SP6 (COM. BLAST)  
 COATING - PRIMER & PAINTED FINISH  
 OPERATING PRESSURE: ATMOSPHERIC  
 PRESSURE TEST: 3-5 PSI AIR W/ SOAP TEST  
 INTERSTITIAL: PERLITE CONCRETE MATERIAL BETWEEN PRIMARY & SECONDARY

GENERAL NOTES

THIS DRAWING IS FOR ILLUSTRATION PURPOSES ONLY AND IS NO TO BE RELIED UPON FOR ANY OTHER PURPOSE. NO WARRANTY OF MERCHANTABILITY, OF FITNESS FOR A PARTICULAR PURPOSE OR OF ANY OTHER KIND, EXPRESSED OF IMPLIED, IS HEREBY MADE.

 MODERN WELDING COMPANY, INC.  
 "SUPERVAULT" MH-PROTECTED AST  
 MHC-D3-4,000  
 TANK NOM. CAPACITY: 4,000 GALLONS

DWN. BY:	SCALE: NONE	DATE:	DWG NUMBER
APR. BY:	JOB NO.:JOB	SHEET: 1 of 1	