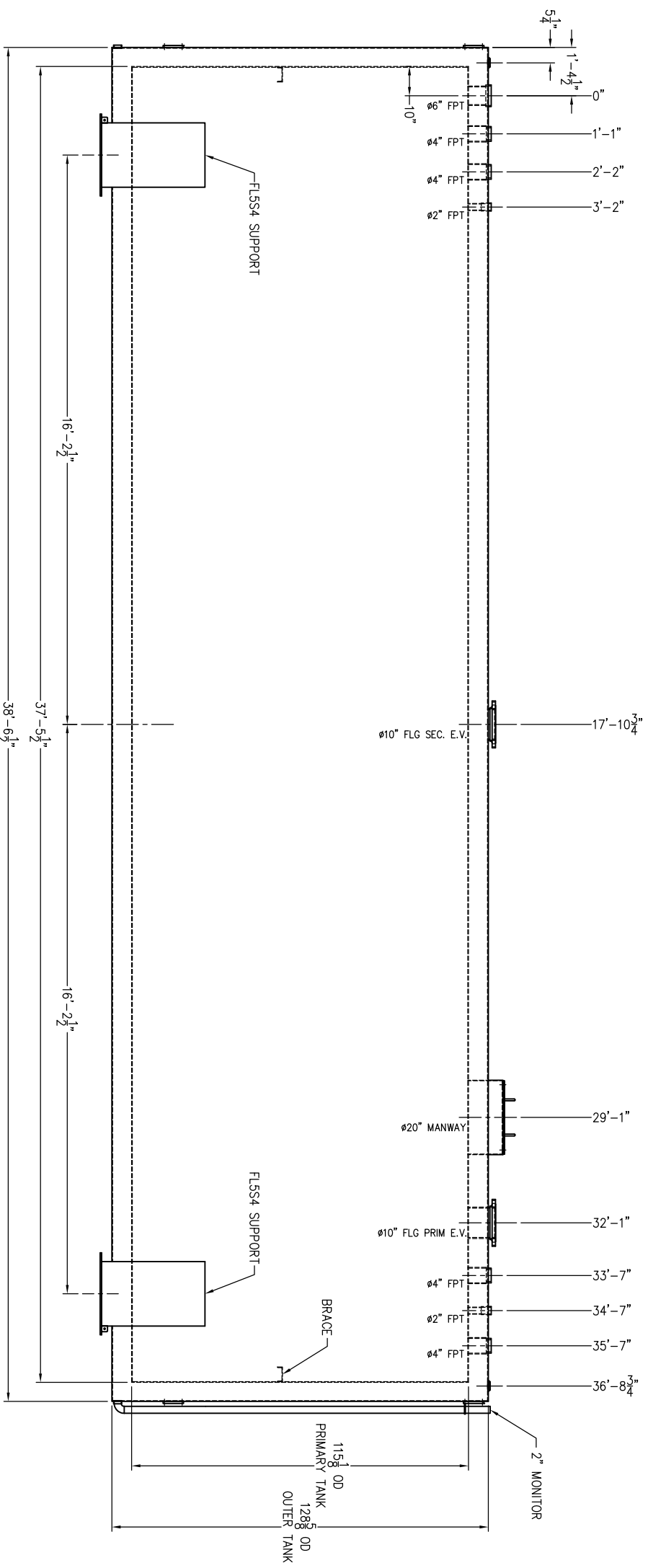
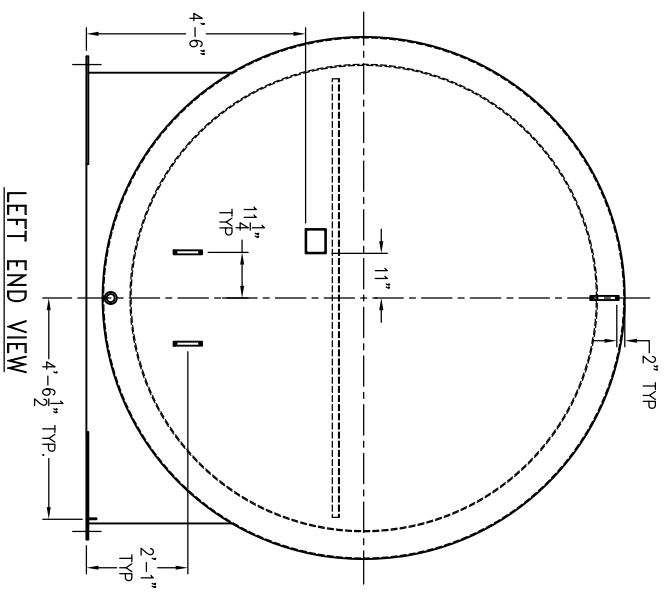


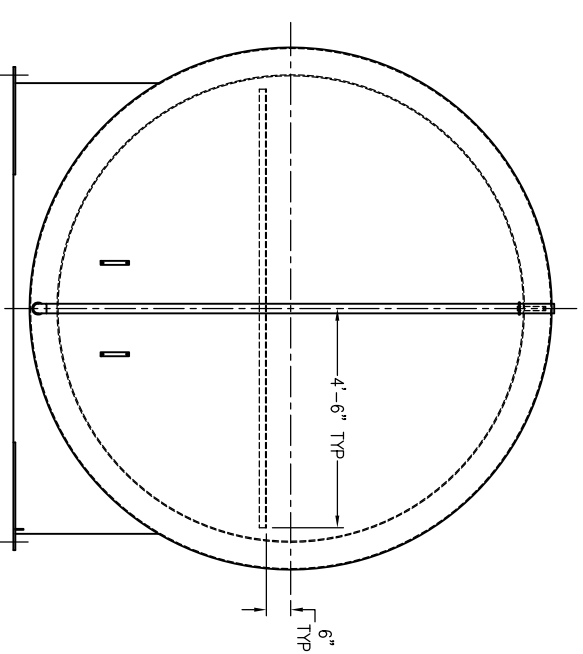
**STANDARD**  
**MODEL NO. MHC-D5-20000**  
**CUSTOMER APPROVAL DRAWING**



ELEVATION VIEW



LEFT END VIEW



RIGHT END VIEW

CUSTOMER APPROVAL: \_\_\_\_\_  
 DATE: \_\_\_\_\_  
 SHOP ORDER NO.: \_\_\_\_\_  
 EST. STEEL TANK WEIGHT: 31,600 LBS.

VENTING CAPACITY  
 PRIMARY: 508,400 SCFH  
 SECONDARY: 527,400 SCFH

<b>modern custom fabrication</b> <b>fresno california</b>	
<small>P.O. Box 11925 • 2421 E. California Ave. • Fresno, California 93721                  Ph: (559) 264-4741 OR 800-800-TANK • Fax: (559) 237-3413</small>	
<small>Prepared for</small>	
<b>SUPERVALUUT MH-PROTECTED ABOVE GROUND STORAGE TANK</b>	
<b>MODEL NO. MHC-D5-20000</b>	
DRAWN BY: JJK CHECKED BY: _____ DWG./JOB NO.: _____	SCALE: NTS DATE: _____
SH1. 1 OF 1	