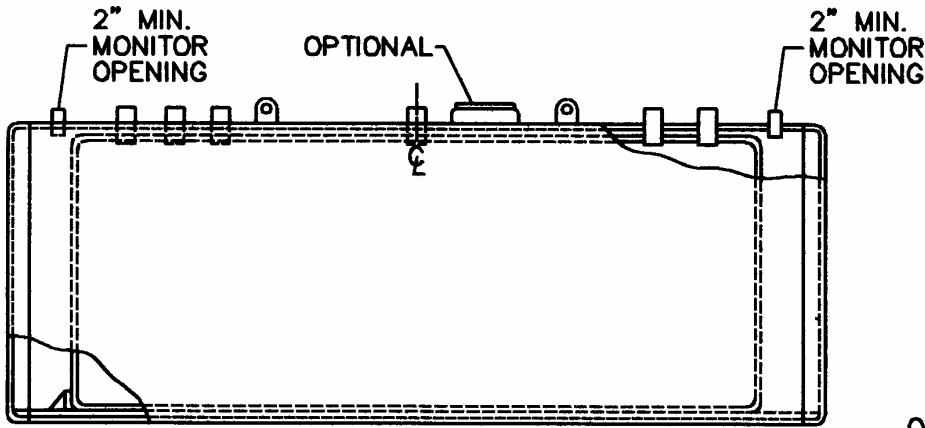
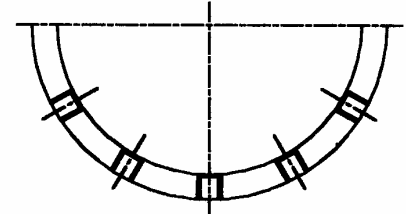




MODERN'S ACT-100-U™ UNDERGROUND DOUBLE WALL UL TYPE II STORAGE TANKS



FITTING LOCATION SHOWN FOR 12'-0" LONG AND LONGER



QTY. AND LOCATION OF CHANNEL STAND OFFS VARY

APPROX. CAPACITY (GALLONS)	INNER TANK		OUTER TANK	
	NOM. DIAMETER	NOM. LENGTH	NOM. DIAMETER	NOM. LENGTH
560	48"	6'-0"	51"	7'-0"
1,000	64"	6'-0"	67"	7'-0"
2,000	64"	12'-0"	67"	13'-0"
3,000	64"	18'-0"	67"	19'-0"
4,000	64"	24'-0"	67"	25'-0"
4,000	96"	10'-8"	99"	11'-8"
5,000	96"	13'-4"	99"	14'-4"
6,000	96"	16'-0"	99"	17'-0"
8,000	96"	21'-4"	99"	22'-4"
10,000	96"	26'-8"	99"	27'-8"
12,000	96"	32'-0"	99"	33'-0"
15,000	120"	25'-6"	124"	26'-6"
20,000	126"	30'-11"	130"	31'-11"

Tank lengths listed above are based on nominal tank dimensions.
Overall tank lengths will vary during actual manufacturing.

STANDARD SPECIFICATIONS

- Built per UL 58 , 1746 part IV and ACT-100-U tank specifications. Tanks will bear UL 1746 part IV and ACT-100-U labels.
- Modern's standard 2000 opening locations and required lifting lugs.
- Exterior is coated per ACT-100-U requirements.
- Striker plates provided under all fitting openings.
- Optional 24" reverse flange manway with or without fitting openings in cover.
- Interior coating systems available upon request.
- Other tank sizes available upon request.