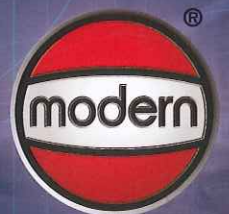


MODERN CUSTOM FABRICATION

Performance Perfected, Integrity...Yes!



MODERN
CUSTOM
FABRICATION,
INC.

Modern Technology, Custom Fabrication, and the Quality You Expect from a Leader

Since 1932 we have been providing *custom* tanks to various industries. Products can be fabricated to conform to many codes and standards including API, ASME, AWWA, NFPA and UL.

Over 145,000 vessels have been certified and stamped in accordance with ASME Section VIII, Division I. Vessels are produced by utilizing Modern's technical expertise in steel fabrication and welding. We employ the latest techniques and machining equipment in our fabrication process. Drawings and calculations are generated using the latest software technology for accuracy and efficiency.

Welding techniques include: Shielded metal arc, flux cored, gas metal arc and submerged arc, gas tungsten arc and arc stud welding. These processes are used in the fabrication of carbon steel and stainless steel vessels.

Upon completion of fabrication and testing, all products can be painted to your specifications.



Supervault MH

The first insulated & secondary containment AST to pass the 4-hour Fire-rated SwRI 95-01 & 95-03 Multi-Hazard test.

- *The toughest national test for AST's. Ethanol & methanol compatible with a 30-year warranty.*

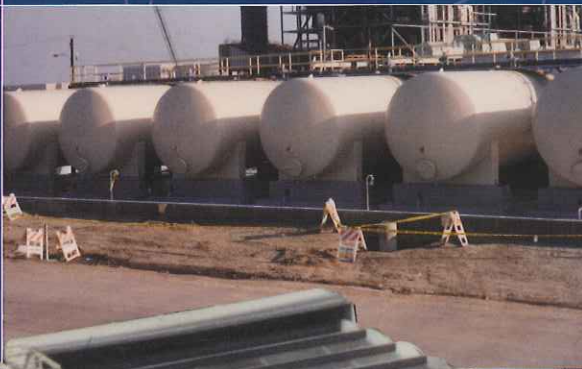


Hydropneumatic Tank

Up to 50,000 gallon capacity

Custom Fabricated Vertical & Horizontal Filter Tanks

We can manufacture tanks in a variety of diameters and capacities, operating at various pressures, that are built to your specifications.



Aqueous Ammonia Tanks

*14 ft. diameter
with capacities up
to 40,000 gallons*



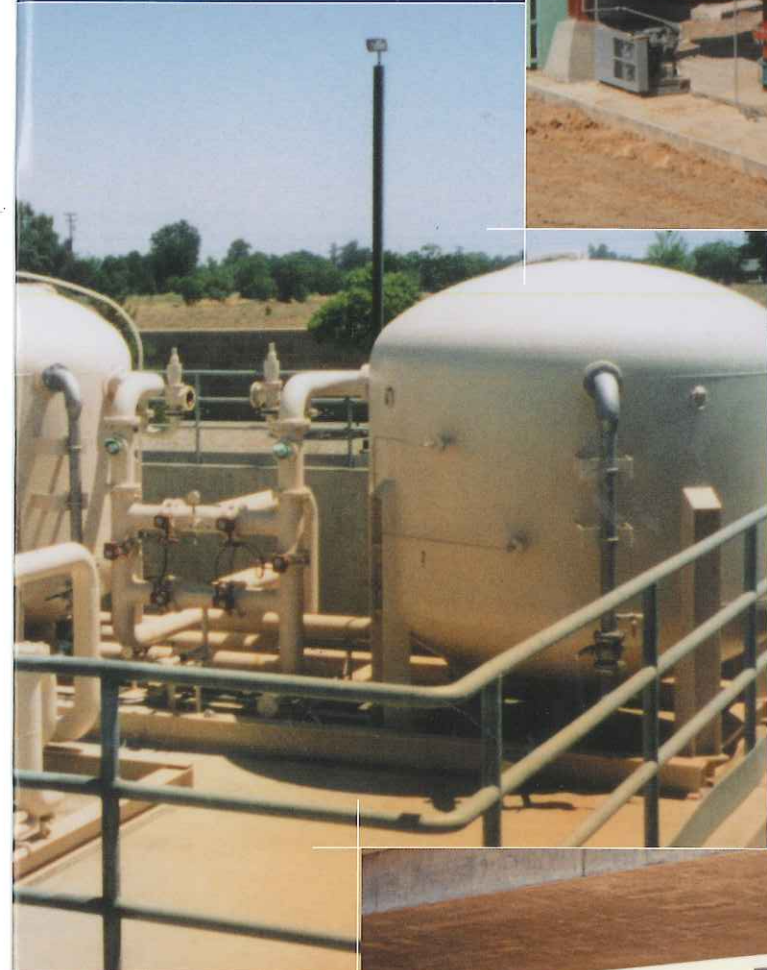
**Refractionator
Top Section**

Traveling Water Screen
*Fabricated of Stainless
or Carbon Steel*

Surge Tank
21,000 gallon
capacity, with a
working pressure
of 150 PSI



**Carbon Filter Tanks
with Skids & Piping**
125 PSI working
pressure with T316
stainless interior
piping headers



4-Cell Filter Tank
96" diameter with
a 10,000 gallon
capacity and a
working pressure
of 125 PSI

Welding Capabilities

One of several automated subarc welders used in the manufacturing of our tanks and other custom orders assures customers that their orders meet or exceed all code requirements.



Modern Custom Fabrication Manufacturing Capabilities

Material Cutting Equipment

Plate Shear Rated capacity: 3/4" x 10'
Saw Maximum seam and pipe size permitted in single cut: 12"

Flame Cutting Equipment:
Plasma Arc:

Max. Thickness
4"
1"

Material Forming Equipment—Plate Rolls

Type:	Dbl. Pinch	Pinch
Min. I.D.:	1'-6"	2'-0"
Max. Width:	10'-0"	10'-0"
Max. Thickness:	5/8" mild steel	1-5/8" mild steel

Brake

Type: Knife
Rated Capacity: 400 tons
Max. Forming Width: 14'-0"

Hydraulic Press

Type: 4-Poster
Rated Capacity: 500 tons

Angle Roll

Max. Angle Size: 3" x 3" x 3/8"
Min. O.D.: 4'-0"

Head Flanging Machine

Manufacture: Blue Valley
Max. Thickness: 3/4"

Facility Specifications and Shipping Information

Floor Space (approx. square footage): General office 4,000; Engineering 1,000; Production 85,000; Inside Storage 13,000;
Yard Storage 266,000

Bays and Cranes

Production Area Size	Crane Capacity	Crane Hook Ht.	Cranes Per Bay	Max Combined Lift Per Bay
250' x 70'	10 tons	32'	2	20 tons
180' x 60'	10 tons	30'	2	20 tons
260' x 60'	5 tons	30'	1	8 tons
	3 tons	30'	1	---
250' x 50'	3 tons	25'	2	6 tons
240' x 70'	3 tons	25'	2	6 tons

Maximum mobile or fixed yard crane loading capacity: 25 tons

Maximum mobile equipment available locally for heavy lifts: 175 tons

Width and Height of largest shop door: 70' x 30'

Property contains one rail spur

Proximity to the following transit conveniences:

Rail Siding:	Southern Pacific
Barge facility:	San Francisco/Oakland
Truck (heavy hauler):	Fresno, CA

1-800-800-TANK

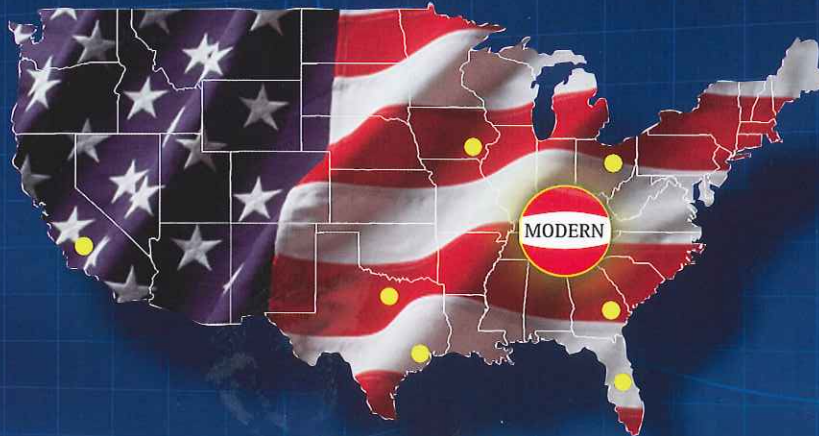
**Modern Custom Fabrication is a Member of and Complies with
the Following Standards and Codes: ASME, AWWA, API, UL, SWRI**



MODERN CUSTOM FABRICATION, INC.

1-800-800-TANK

2421 E. California Ave., Fresno, California 93721
Phone: 559-264-4741 • Fax: 559-237-3413
modern16@modweldco.com



Corporate Office Modern Welding Co., Inc.

2880 New Hartford Road, Owensboro, KY 42303
Phone: 270-685-4400 • 1-800-922-1932 • Fax: 270-684-6972
www.modweldco.com • E-mail: modern@modweldco.com

Manufacturing Subsidiaries

Modern Welding Co. of Owensboro, Inc.

1450 E. Parrish Ave.
Owensboro, Kentucky 42303
Phone: 270-683-5323
Fax: 270-684-5245
modern1@modweldco.com

Modern Welding Co. of Ohio, Inc.

One Modern Way
Newark, Ohio 43055
Phone: 740-344-9425
Fax: 740-344-6018
modern5@modweldco.com

Modern Welding Co. of Florida, Inc.

1801 Atlanta Ave.
Orlando, Florida 32806
Phone: 407-843-1270
Fax: 407-423-8187
modern6@modweldco.com

Modern Welding Co. of Texas, Inc.

2 Locations
715 Sakowitz St.
Houston, Texas 77020
Phone: 713-675-4211
Fax: 713-673-4062
modern7@modweldco.com

200 N. Main St.
Rhome, Texas 76078
Phone: 817-636-2215
Fax: 817-636-2680
modern15@modweldco.com

Modern Welding Co. of Iowa, Inc.

2818 Mt. Pleasant Rd.
Burlington, Iowa 52601
Phone: 319-754-6577
Fax: 319-754-8428
modern8@modweldco.com

Modern Welding Co. of California, Inc.

4141 N. Brawley Ave.
Fresno, California 93722
Phone: 559-275-9353
Fax: 559-275-4381
modern10@modweldco.com

Modern Welding Co. of Georgia, Inc.

300 Prep Phillips Dr.
Augusta, Georgia 30901
Phone: 706-722-3411
Fax: 706-724-8133
modern14@modweldco.com

Modern Custom Fabrication, Inc.

2421 E. California Ave.
Fresno, California 93721
Phone: 559-264-4741 • 1-800-800-TANK
Fax: 559-237-3413
modern16@modweldco.com